

This drawing and any information or descriptive matter set out hereon are confidential and the copyright of ELKINGTON GATIC, and are not to be disclosed, loaned, copied or used for manufacturing or tendering or for any other purpose without permission. © 2010

Revision

Date Sig

CONCRETE TO BE POURED UP TO THE LEVEL OF THE WEARING COURSE.

ASPHALT TO BE ROLLED IN LINE WITH THE CHANNEL. (SEE PLAN VIEW.)

ASPHALT WEARING COURSE.

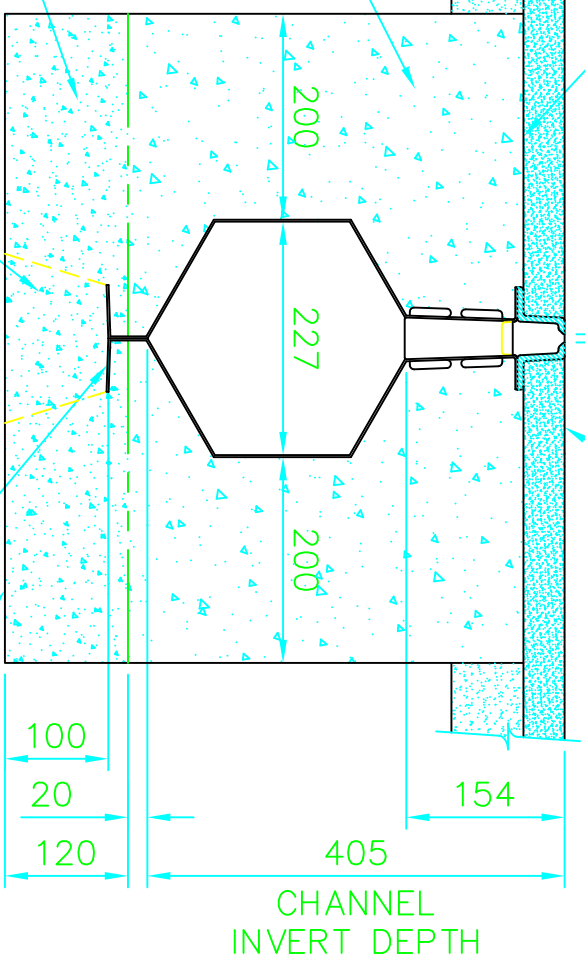
ASPHALT BASE COURSE.

SECOND POUR TO BE DONE WHEN THE FIRST POUR HAS SUFFICIENTLY CURED MINIMUM GRADE C32/40 CONCRETE. (ELKINGTON GATIC RECOMMENDS USING 20mm AGGREGATE)

FIRST CONCRETE POUR TO FIX THE CHANNEL TO THE BOTTOM OF THE TRENCH MINIMUM GRADE C32/40 CONCRETE (ELKINGTON GATIC RECOMMENDS USING 20mm AGGREGATE) TO 20mm BELOW THE INVERT OF THE CHANNEL TO ALLOW THE CONCRETE TO FLOW UNDERNEATH.

HAUNCH SLOT DRAIN AT FEET TO CORRECT LEVEL.

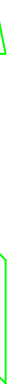
FEET AT ENDS ONLY.



ASPHALT TO BE ROLLED IN LINE WITH THE CHANNEL

DO NOT ROLL OVER THE CHANNEL

3000

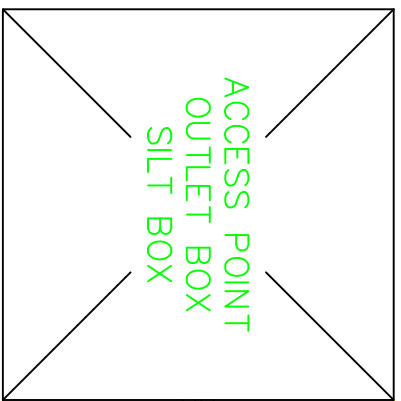


80



NOTE:
THE RESPONSIBILITY TO PROVIDE THE FOUNDATION DESIGN SHOULD BE THAT OF THE PROJECT ENGINEER. THE FOUNDATION SHOULD BE STRONG ENOUGH TO TAKE THE ANTICIPATED LOADS FROM THE LARGEST AIRCRAFT/ VEHICLES THAT WILL TRAFFIC THE CHANNEL.

PLAN DETAIL
NOT TO SCALE



ACCESS POINT
OUTLET BOX
SILT BOX



DO NOT SCALE



A division of ALUMASC LIMITED.

Hammond House
Holmestone Road, Poulton Close
Dover, Kent CT17 0UF, England
Telephone: +44 (0) 1304 203545
Fax: +44 (0) 1304 215001
E.Mail: acp@gatic.com
Web: www.slotdrain.com
Web: www.gatic.com



STANDARD SLOT DRAIN
CROSS SECTION
AND PLAN INSTALLATION DETAILS

Drawn by G.J.C. Date 23:11:10

Checked by Scale 1:7.5

Drawing Number

WC/4285